

VOTE
MARCH 12
2019



FACTS ABOUT
THE SCHOOL LEVY



LPOSD will hold a **Replacement Levy** Election **March 12**

On March 12, the Lake Pend Oreille School District is asking voters to approve a two-year levy to replace the current, expiring levy. The replacement levy is for \$12,700,000 each year.

Our schools rely on local support to fund essential programs, staff, services and activities collected through a supplemental levy every two years. This local tax represents

30% of district revenue.

The intent of this levy is to allow us to continue to improve, provide new opportunities for students and create a more effective teaching and learning environment for every child and staff member, and recruit, train, and retain highly effective personnel in our district.

What does the levy fund?

- Funds one-third of **ALL district staff**; approximately 300 full-time and part-time staff positions.
- Supports **sound class size**, secondary **electives** and small rural schools.
- Funds **30% of the school district's annual revenue**.
- Funds **ALL academic and athletic extracurricular activities**.
- Funds **curriculum and instructional materials**, as well as professional development and instructional mentoring.
- Funds **technology**: internal network **upgrades**, **fiber network**, hardware, software licenses and the **entire technology department staff**.
- Funds highly effective personnel. Funds a **wage increase for our teachers and staff** to become regionally competitive in Idaho compensation.
- Funds teaching and learning and student wellness.

The new levy replaces the expiring levy; it is not added on top. It is not a permanent levy.

A Letter from the Superintendent

Dear Patrons of the Lake Pend Oreille School District,

On March 12, a Maintenance and Operations Instructional Levy to support the Lake Pend Oreille School District and our community will be on the ballot. It is our hope that voters will make an informed decision at the polls.

LPOSD has adjusted our practices significantly to reflect the feedback of our community. During this past year, our district conducted a robust strategic planning process, including surveys and community meetings. The results led our school board to establish five-year goals which are incorporated into this levy request. Additionally, we have added full-day kindergarten options, increased experiential learning classrooms, and created a Home-school Academy in response to our community's expressed desires. We have also continued to build pathways for students that better prepare them for both college and career options after high school.

LPOSD depends on local tax support to keep all of our schools open. Eighty-three percent of Idaho's school districts currently have a Maintenance and Operations Supplemental Levy in place. Maintaining district operations is only possible by "supplementing" the tax dollars allocated from the state. In our case, the levy accounts for approximately one-third of LPOSD's overall operating budget.

People are indeed what make the difference in the quality of education for our students. A key goal of this levy is to provide more competitive salaries to help our district recruit, train, and retain highly effective personnel; again, this was a top priority in the community's feedback. Also in the levy are all athletics and extracurricular activities, instructional materials, professional staff development, and technology upgrades.

Without passage of this levy, we will be forced to lay off more than 300 people. With the reduction in teachers and staff positions, we also will need to consolidate schools: Clark Fork High School, Hope Elementary, Southside Elementary, Lake Pend Oreille Alternative High School, and possibly Northside Elementary students would be moved into other schools. This would result in class sizes of more than 40 students and double-shifts at the schools.

LPOSD's employees have done a stellar job over the years to provide an excellent education for the children of our community. Please get out and vote March 12 to continue the success for students, families and the community.

Thank you,

**Shawn Woodward
Superintendent of Schools**

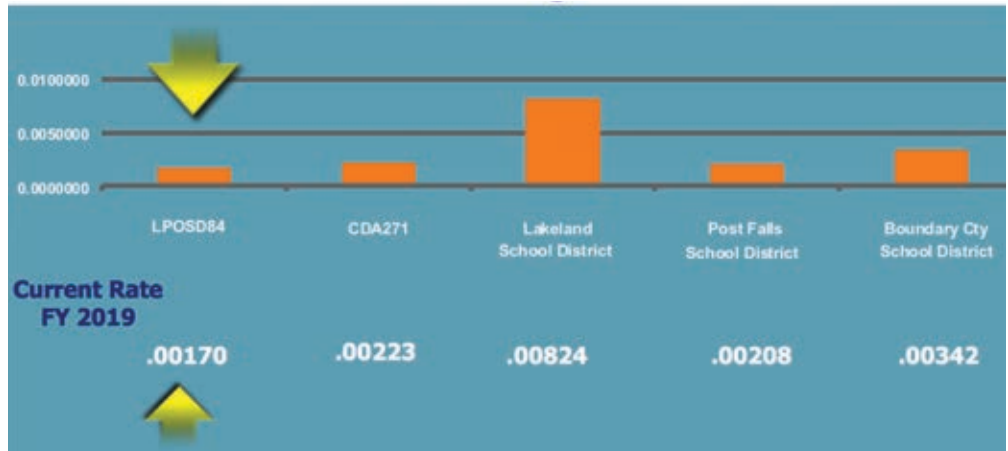


What will the levy cost?

- \$12,700,000 each year for two years.
- Levy replaces the expiring levy; it is not added on top.
- It is NOT a permanent levy.
- A home with an assessed valuation of \$250,000 with homeowner's exemption currently pays \$20.75/month. Replacement levy projected increase of \$6.92/month in 2020.

Voter-Approved Levies FY 2018-19 Comparison Statewide

State average tax rate is .00389. Our rate is .00170, 56% below the FY18 state average



| Bonner County Assessed Value of Home and 1 Acre Land | Current Tax with Homeowner's Exemption (2019) | Projected Tax with Homeowner's Exemption in Year One (2020) | Projected Increase Over Current Tax in Year One |
|--|---|---|---|
| | 2019 ANNUAL | 2020 ANNUAL | |
| \$100,000 | \$83 | \$111 | \$28 |
| \$150,000 | \$125 | \$166 | \$41 |
| \$200,000 | \$166 | \$221 | \$55 |
| \$250,000 | \$249 | \$332 | \$83 |
| \$300,000 | \$332 | \$442 | \$110 |
| \$350,000 | \$415 | \$553 | \$138 |
| \$400,000 | \$498 | \$663 | \$165 |
| \$450,000 | \$581 | \$774 | \$193 |
| \$500,000 | \$664 | \$884 | \$220 |



WHAT IF THE LEVY FAILS?

It would result in a drastic reduction of programs and services to the detriment of our community and students.

- Learning environment and safety of students would be jeopardized.

- One-third of all district staff ~ 300 full and part time positions - would be eliminated.
- Schools would be consolidated, with double-shifting schedules in place.

- All academic and athletic extracurricular activities would be eliminated.
- Technology, all curricular materials, and professional development would be basically eliminated or antiquated.

- Large and overcrowded class sizes.
- Eliminate secondary elective courses.
- Other parts of Bonner County economy will be impacted.



901 Triangle Drive
Ponderay, Idaho 83852

PRSR STD
U.S. POSTAGE
PAID
PERMIT NO. 50
Sandpoint, ID
83864

Lake Pend Oreille School District **SUPPLEMENTAL LEVY** Election

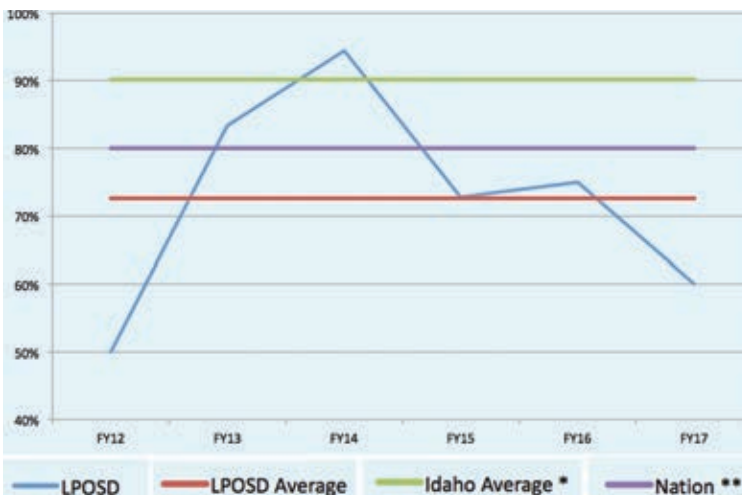


VOTE MARCH 12, 2019

Retaining teachers is essential

One important area the levy will help address is our ability to recruit, train and retain the best personnel possible. Currently, our pay scales are among the lowest for like-size districts statewide, as well as low for districts in our northern Idaho region. The comparatively low pay our teachers and staff now receive is making it difficult to retain qualified personnel who are being lured away to higher-paying districts.

The levy would fund a wage increase for teachers and staff, to help make LPOSD regionally competitive in compensation - and help us retain our best teachers. This chart illustrates how the district's personnel retention rate has declined compared to state and national averages.



WHEN and WHERE to VOTE

- **Vote in person.** Polls will be open from **8 a.m.** until **8 p.m.** **Tuesday, March 12, 2019.** All registered voters who live in the Lake Pend Oreille School District within Bonner County, Idaho, are eligible to vote.
- **Vote at your regular county polling place.** Find out more on the Bonner County elections website at www.bonnercounty.us/elections.
- The last day to **pre-register** for the March 12 election is **February 19, 2019**, but the State of Idaho has Election Day registration - so if you miss the pre-election registration date, you can still go to your polling place on Election Day, register to vote, and vote at the same time.
- Or **vote via absentee ballot.** If you will be out of the area on **March 12**, simply fill out an absentee ballot at the Bonner County election office, located in the County Building at 1500 Highway 2 in Sandpoint. For more information, call 208-255-3631. **The last day that the elections office can receive applications** for mail-out absentee ballots is **March 1, 2019** (please mail as early as possible). **Voted ballots must be received** by the elections office by **8 p.m. March 12, 2019.**
- You may **vote in person** at the elections office beginning **February 25, 2019**, and the **final day for in-person voting** prior to Election Day is **March 8, 2019.**